

PETS SHIPPING

How many pets are travelling by air every year?



Millions of pets are shipped by airplane every year with relatively few incidents (less than 0.01%). Pet road transport incidents are much more frequent.

HOW PETS ARE TRAVELLING?



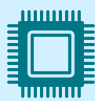
AIRLINES MIGHT APPLY THEIR OWN RULES AND MORE RESTRICTIVE CONDITION.

GENERAL RULES FOR SHIPPING PETS AS CARGO :



THIS KENNEL IS THE WRONG SIZE FOR YOUR DOG.

THIS KENNEL IS THE CORRECT SIZE FOR YOUR DOG.



MOST COUNTRIES REQUIRE A MICROCHIP.



VALID RABIES VACCINATION RECORD IS REQUIRED.



TRANQUILLIZING PETS IS NOT USEFUL BUT EVEN DANGEROUS



PETS MIGHT NOT BE ALLOWED TO FLY IN CASE OF EXTREME WEATHER CONDITION (HEAT OR COLD) IN ORDER TO PREVENT HEALTH PROBLEMS.



PROCEDURE AND COST OF MANIFEST CARGO SHIPMENTS ARE AFFECTED BY DIFFERENT FACTORS, AS CONSIDERED SIMILAR TO COMMERCIAL SHIPMENTS.

SNUB NOSED PETS AND/OR DOG BREEDS CONSIDERED DANGEROUS BY AIRLINES MAY BE SUBMITTED TO PARTICULAR RESTRICTIONS AND PROCEDURES, AND BE FORBIDDEN TO FLY.

For more info about unaccompanied pets shipping from Rome FCO you can visit:

WWW.BOCCANERAPERAZZOLI.COM

